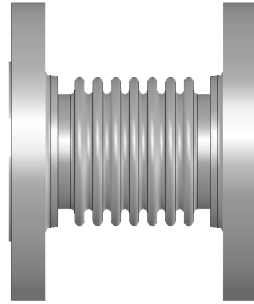


**IMMEDIATE
SHIPPING**

STOCKED

Expansion Joints



- Immediate Quoting
- Immediate Shipping (*on styles below*)
- Made in the U.S.A.

STOCKED Expansion Joints are **150 psi single bellows design, Unrestrained Singles** style with carbon steel plate flanges or carbon steel weld nipples (Sch. 40) on each end.

Adding a liner facilitates flow (*please select Liner Part Number when including Liner Option*)



Part Number	Nominal ID Size (in.)	Fittings Each End	Number of Bolt Holes	Overall Length (in.)	Axial Compression (in.)	Axial Extension (in.)	Lateral Offset (in.)	Part Number with Liner
EJSSPFL0200	2	CS Plate Flange	4	6	0.94	0.31	0.38	EJSSLINR0200
EJSSPFL0250	2.5	CS Plate Flange	4	6	0.94	0.31	0.31	EJSSLINR0250
EJSSPFL0300	3	CS Plate Flange	4	6	0.94	0.31	0.25	EJSSLINR0300
EJSSPFL0400	4	CS Plate Flange	8	6	0.94	0.31	0.19	EJSSLINR0400
EJSSPFL0500	5	CS Plate Flange	8	6	0.94	0.31	0.19	EJSSLINR0500
EJSSPFL0600	6	CS Plate Flange	8	6	0.94	0.31	0.13	EJSSLINR0600
EJSSPFL0800	8	CS Plate Flange	8	6	1.00	0.38	0.13	EJSSLINR0800
EJSSPFL1000	10	CS Plate Flange	12	8	1.25	0.38	0.13	EJSSLINR1000
EJSSPFL1200	12	CS Plate Flange	12	8	1.25	0.38	0.13	EJSSLINR1200
EJSSWNP0200	2	CS WELD NIPPLES	n/a	5	0.31	0.31	0.06	n/a
EJSSWNP0250	2.5	CS WELD NIPPLES	n/a	5	0.31	0.31	0.06	n/a
EJSSWNP0300	3	CS WELD NIPPLES	n/a	5	0.38	0.19	0.06	n/a
EJSSWNP0400	4	CS WELD NIPPLES	n/a	6	0.63	0.25	0.06	n/a
EJSSWNP0500	5	CS WELD NIPPLES	n/a	7.5	0.63	0.25	0.06	n/a
EJSSWNP0600	6	CS WELD NIPPLES	n/a	9	0.19	0.38	0.06	n/a
EJSSWNP0800	8	CS WELD NIPPLES	n/a	8.5	0.19	0.38	0.06	n/a
EJSSWNP1000	10	CS WELD NIPPLES	n/a	9.5	0.19	0.44	0.06	n/a
EJSSWNP1200	12	CS WELD NIPPLES	n/a	8	0.88	0.88	0.06	n/a



Click here or Scan the QR Code to request a quote for these stocked expansion joints

